

## Handheld Thermal Camera

### Features:

High precision resolution, 640×480 detector, can get a super pixel upto 1280×960. Items Technical parameter 180° rotating concentrator and 5-inch high-brightness and high-resolution touch-screen LCD display can place any target within a comfortable viewing angle with function of compass, laser ranging, GPS Bluetooth, Wi-Fi transmission and 4G communication (optional), GPS location information can be automatically added to each still image. USB Type-C fast charging, HDMI video output, built-in 128G memory and external high-speed memory card.

### Application:

- Power Industry
- Scientific research
- Building diagnosis
- Electrical & mechanical Testing
- Railway Industry
- Steel Industry
- Petrochemical Industry
- Automation
- r as per customer size requirement.

## Tempsens's HighEnd series THERMEYE 480 & 640



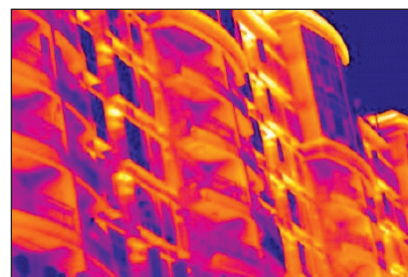
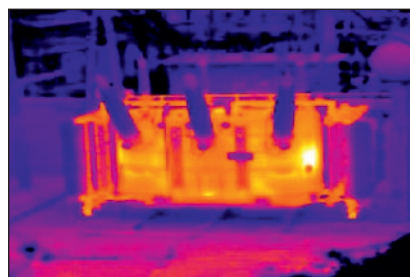
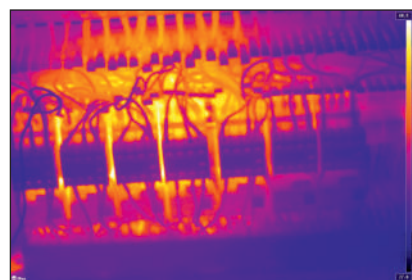
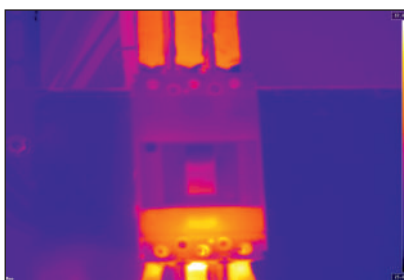
Industrial thermal cameras with replaceable auto-focus lenses designed for various application. New generation of detectors featuring the NETD as low as 35mk, enabling them to capture more subtle hotspots and display sharper and cleaner thermal maps. Besides, the products also embrace other analysis and intelligent functions such as trend analysis, area measurement, and 5-inch OLED touch displays.

High thermal sensitivity detector, accurate temperature measurement HD resolution, clear picture quality.

## Technical Parameter

Model	Thermeye480	Thermeye640
Detector Resolution	480X360	640X512
Super Resolution	960x720	1280x1024
Detector Type	Uncooled infrared detector, 12μm	
Thermal Sensitivity/NETD	35 mk	
Wavelength Range	7.5~14 μm	
Frame Rate	30 Hz	
Lens and FOV	Standard lens: 25°. Optional lens: wide-angle lens 45°; long-focus lens 14°; ultra-long lens 7°; macro lens 60μm; super macro lens 30μm manual autofocus lens (AF/MF), for automatic recognition once mounted	
Spatial Resolution/iFOV	Standard: 0.92mrad; wide-angle: 1.71 mrad Long-focus: 0.52 mrad; ultra-long-focus: 0. 27 mrad	Standard: 0.68 mrad; wide-angle: 1.26 mrad Long-focus: 0.38 mrad; ultra-long-focus: 0. 2 mrad
Minimum Imaging Distance	10 cm	
Measurement Range	Low temperature range: -20°C~+150°C High temperature range: 100°C~650°C Automatic (optional: -20~1500°C)	
Display Size	5 -inch sunlight readable, OLED touch display; 1280× 720 resolution, Gorilla explosion-proof glass	
Visible Light Camera	13 megapixel digital camera	
Palettes	19 palettes including iron red, gray, inverse iron red, inverse gray	
Image Mode	Thermal imaging, PIP, thermal fusion, visible light	
Temperature Scale	Automatic, manual, accurate	
Storage Medium	Internal SD memory card 64 GB	
Text Note	Yes. Free text input, preset text, OCR recognition, QR code scanning, and voice-to-text input supported	
Voice Note	Supported, with a maximum time length of 300s	
Radiation Infrared Video Recording	Compressed full radiation video recording (.irv) supported	
Non-radiation Infrared or Visible Light Video	Standard MP4 video recording	
Radiation Infrared Video Stream	TYPE-C/WLAN connection to PC, for real-time transmission of radiation infrared video streams	
Non-radiation Infrared Video Stream	RTSP H.264	
Communication Interface	USB3.0, Wi-Fi, Bluetooth	
Video Resolution	1280 × 720 pixels	
Measurement Accuracy	±2°C or ±2% of the reading	
Temperature Measurement Correction	Correction of screen emissivity, reflected background temperature, ambient temperature, atmospheric transmittance, and distance parameters	
Positioning	GPS, BDS, GLONASS, or Beidou supported, with geographical location data overlaid on images	
Laser Rangefinding	laser range finding supported	

Area Measurement	Supported	
Analysis Functions on the Device	Up to 15 movable points, lines, frames, circles, and polygons; up to 5 preset modes	Up to 20 movable points, lines, frames, circles, and polygons; up to 5 preset modes
Temperature Difference Analysis	Supported	
Trend Analysis	Temperature trend recording, display at 15-minute intervals, image capture and storage in the specified file, and image viewing in the device's library in secondary analysis mode	
Image Freezing	Single frame	Single frame + full radiometric video streams
Intelligent Routine Inspection	Supported. General task package import and editing, standard and automatic naming of images	
Zooming In	1x ~ 10x	
Connecting Methods	Wi-Fi, Bluetooth, Type-C	
Flashlight	Available	
Language	English, Japanese, Poland, Russian, Korean, Hungarian, Bap, German, French, Spain, Italy, Turkey	
Microphone/Speaker	Available	
Battery	10000 mAh lithium-ion battery, field-replaceable, fast charging (certified)	
Charge Mode	Direct charging, desktop charging	
Operating Time	Continuous operating time ≥ 4 hours (depending on the actual environment and service conditions)	
External Interface	TYPE-C USB3.0, SD card, SIM card, Mini HDMI, tripod	
Impact and Vibration	Impact 25g (IEC 60068-2-27); vibration 2.5g (IEC60068-2-6)	
Weight and Dimensions (H × W × D)	1.3kg (including battery), 14.4×12.9×30.7 cm	



**Tempsens Instruments (I) Pvt. Ltd. U# I**

B-188A, Road No.5, M.I.A., Udaipur-313003 (Rajasthan) INDIA

Ph. : +91-294-3507700, Fax : +91-294-3507731

Email : info@tempsens.com