

G SERIES

Key Features

- High resolution imaging with wide angle view.
- Relay alarm outputs for DCS.
- Clear live video in low/high light conditions.
- Working in harsh and high ambient conditions.
- Configurable ROI's: point, line, free shape with Model: TE-1100G
- Thermal display, Hot and cold spot detection, Color pallet scaling, Trend charts with Model: Model: TE-1100G

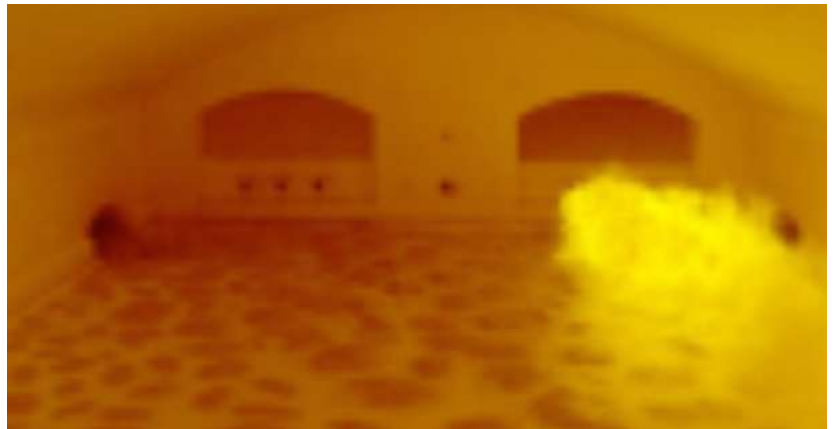
System Components

- Camera and Pinhole Lens.
- Camera/Lens Probe with N2/Water Cooling facility.
- Video Cable
- Control Cable
- Power Cable

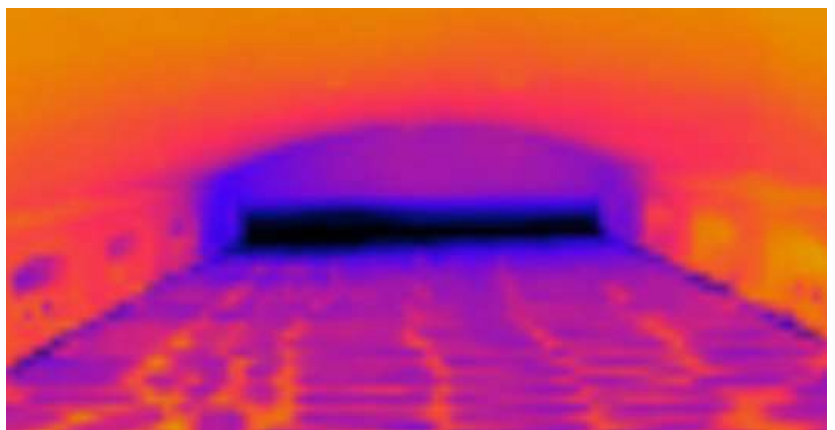
GLASS FURNACE CAMERA SYSTEM



G series high temperature furnace monitoring camera system In Glass melting furnace monitor's various critical process to ensure optimal operation and product quality. These system typically monitor the temperature profile within the furnace, combustion system performance, atmosphere composition, glass level and provide real time data and alerts to operator enabling them to make informed decision, optimize furnace parameters, maintain product quality and ensure safe and efficient glass melting operations.



Visual View of G series camera



Thermal view of G series camera

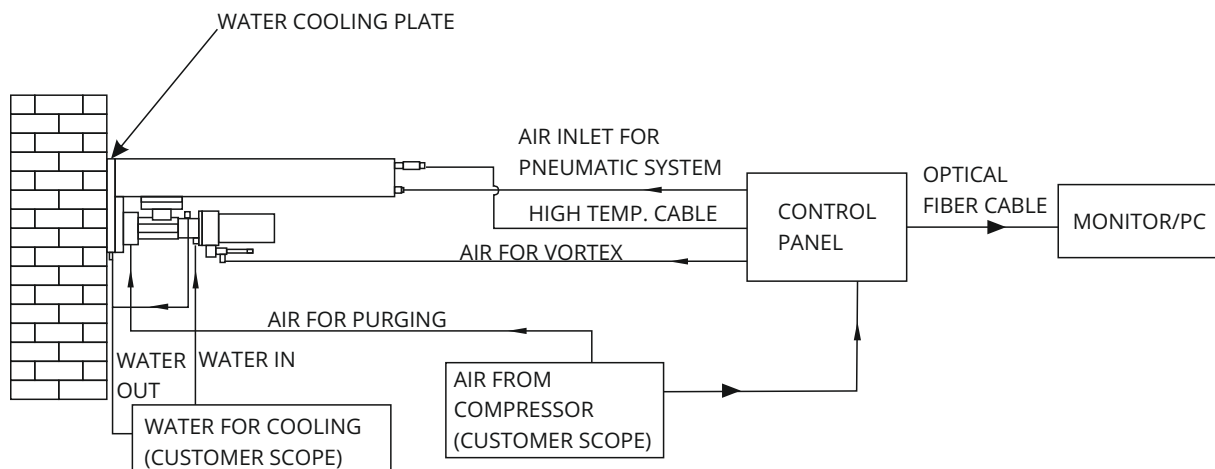
Specifications

Technical	
Environment	up to 2000°C
Cooling system	Vortex AIR & Water cooling
Power	AC 220V/110V
Hole Diameter	100mm
Requirement of Compressed Air	
Pressure	7 ~ 10 kg/cm ²
Volume Flow	50m ³ /h
Temperature	<35°C
Quality	Dust, Oil & Moisture free clean
Requirement of Cooling Water	
Inlet Pressure	2 ~ 5 kg/cm ²
Volume Flow	0.2-1m ³ /h
Quality	DM Water
High Resolution Camera Specification	
Image Sensor	1/2.7" progressive scan CMOS
Resolution	5 Megapixel
Pixels	2592 (H) × 1944 (V)
Minimum Illumination	0.005 Lux@F1.4
Lens	C/CS Mount
Shutter Speed	Auto/Manual, 1/3 s-1/100000 s
Streaming Capability	Three streams
WDR	120db

Gain Control (AGC)	Auto/Manual
Video Compression	H.265+/H.265/H.264+/H.264/MJPEG
Video Out	Ethernet RJ-45 (10/100Base-T)
Power	DC 12V (±25%), AC 24V (±25%), PoE (802.3af)
Power Consumption	<9.2W
Casing	Metal
Thermal Camera Specification	
Temperature Range	700°C to 1800°C / 1000°C to 2500°C
Resolution	640 X 480 Pixels / 1280 x 1024 Pixels
Frame Rate	25 Hz / 50 Hz
Spectral Range	0.85µm to 1.1µm
Thermal Sensitivity	<1K (700°C [$<1292^{\circ}\text{F}$], <2k (1000°C)
Interface	Ethernet/ USB
Accuracy	±0.3% of measure value ±1°C
Power	12 to 24 V DC
Power Consumption	<4 Watt
Pinhole lens	
Lens length	1080 mm
Focal Length	Verifocal Lens: 3.6 mm- 8 mm
Angle of view	Straight view: 0°/ Elbow view: 60°
Field of view	Horizontal 65°, vertical 56°, Diagonal 85°
Focus and IRIS	Manual
Mount	CS Mount

Our Models

Specifications	TFV1100-G	TE1100-G
Video View	Visual	Thermal
lens Type	Pin Hole lens	Pin Hole lens



Tempsens Instruments (I) Pvt. Ltd

B-188A, Road No.5, Mewar Industrial Area (M. I. A.),

Madri, Udaipur-313003 (Rajasthan) INDIA

Ph.:+91-9116554600

Email: info@tempsens.com

