

High Temperature Dry Block Furnace

300°C to 1200°C

Wide Temperature Range

Autocal 1200L & CALsys 1200L offer a wide temperature range from 300°C to 1200°C

Simple to use

The 1200L Autocal & CALsys 1200L block is ideal for Industrial/ Laboratory field use. It is simple enough to testing and calibration uses.

Accuracy and performance

The 1200L Autocal & CALsys 1200L is an easy to use also provides excellent calibration accuracy with stability $\pm 0.35^\circ\text{C}$ at 1200°C.

Computer Interface

The communication port (USB/LAN) enables communication with selected 1200L Autocal & CALsys 1200L calibrators.

CALsys 1200L Autocal 1200L

Highly accurate temperature Calibrator



CALsys- 1200L



CALsys- 1200L Autocal

Autocal 1200L & CALsys 1200L offers easy to use temperature calibrator with wide temperature range from 300 to 1200°C. It is a highly stable standard furnace for calibrating thermocouples or RTD. This calibrator can be used on site for high temperature calibration and also finds its application in glass, electric power, automotive and material process industry. The comparison volume is a metallic block of special material, which has a diameter of 37mm and 160mm depth. The temperature of the calibrator is set and controlled by a self tuned PID controller with automatic super fine adjustment.

The CALsys-1200L Autocal is an automatic temperature calibration system for the Thermocouple and RTDs. The system consists of temperature block and PC software, which together contribute to the whole cycle of auto calibration process. The system accept 4 channels, 4 Thermocouples or 4 RTDs. The connection for these channels through special type of locking connectors. The channel configuration can be done with LCD display via touch screen keypad. The thermocouple microvolt & RTD ohm reading for each channel is monitored with CJC compensation. After the calibration process complete the PC software generates a report of actual calibrated values for the inputs.

SPECIFICATIONS

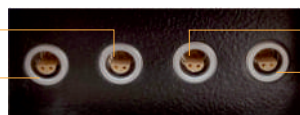
Autocal 1200L & CALsys 1200L

Temperature range	300 °C to 1200 °C
Stability	±0.1°C at 300°C
	±0.2°C at 800°C
	±0.35°C at 1200°C
Radial uniformity	±0.15°C at 300°C
	±0.25°C at 800°C
	±0.4°C at 1200°C
Controlling sensors	R type duplex
Immersion depth	160 mm
Insert OD dimensions	37 mm
Method of Control	Self tuned PID controller
Heating time	1.5 Hrs
Stablization time	15 to 20 mins
Resolution	1°C
Display	LCD, °C or F user-selectable
Size (H x W x D)	590(H) x 450(W) x 530(D) mm
Weight	55Kg
Power requirements	230 VAC or 110 VAC 50/60 Hz 2.5kW
Computer interface	LAN/ USB
Calibration	Accredited calibration certificate provided (Optional)
Environmental operating conditions	0°C to 40°C
Input (Autocal 1200L)	Four channels (one master and three test sensors).high quality universal LEMO connector suitable both for T/C (J, K, N, T, R, S, B type) and RTD
Software (Autocal 1200L)	The calibrator will be provided with software for data recording (Manual Mode) and Excel generation in Auto Mode

SENSOR CONNECTION (Autocal 1200L)

The Calibration system provides calibration upto four channels i.e. one master and three test sensors.

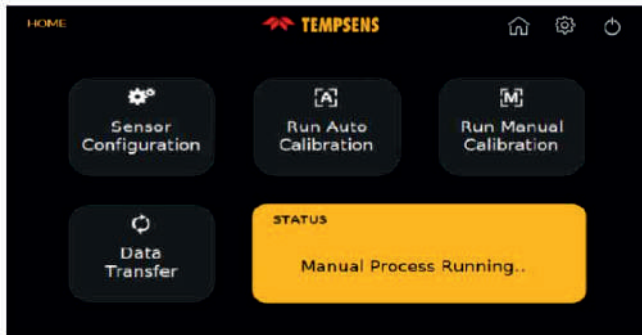
Connection for First TEST Sensor
Connection for MASTER Sensor



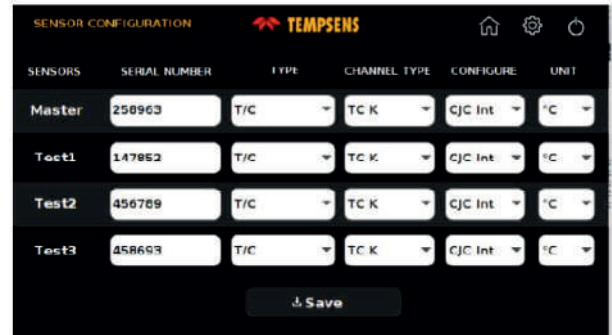
Connection for Second TEST Sensor
Connection for Third TEST Sensor

USER INTERFACE (Autocal 1200L)

Home Screen: In this screen user can select sensor configuration (for selection of type of sensors), mode of operation (auto / manual) and data transfer (file transfer). This window also shows the ongoing process.

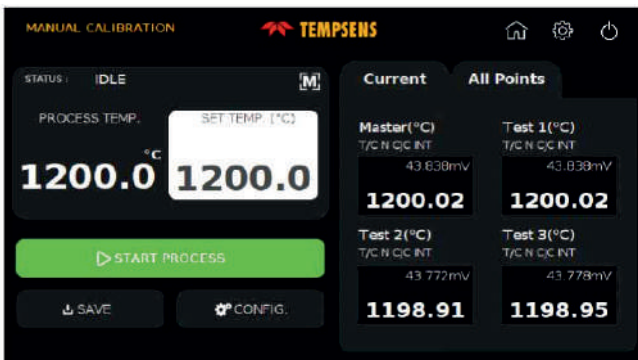


Sensor Configuration: In this screen user select the sensors Thermocouple (J, K, B, N, R, S, T type) / RTD(PT 100, PT 1000, PT50 etc.) for calibration with their serial number and temperature unit (C/F/K).

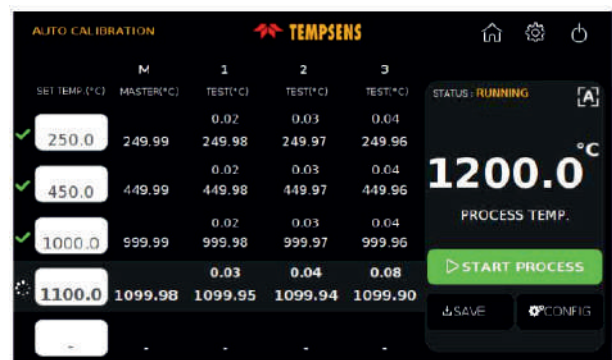


Autocal 1200L have two operating modes i.e. Manual and Auto mode

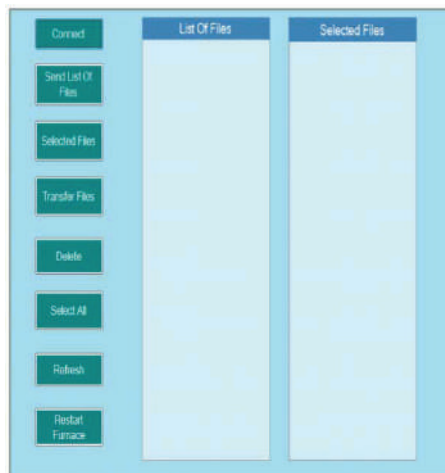
Manual Mode: In this screen user set the temp. Point for calibration and on clicking start process button the process of calibration starts



Auto Mode: In this screen user sets the temperature Points for calibration (Max 5 Points)



SOFTWARE : Tempsens make Easy to use Customized software enables end user to access temperature data both for Manual mode and Automode



ACCESSORIES

- **Inserts for CALsys 1200L & Autocal 1200L model**

Inserts for CALsys 1200L are made of metallic block of special material have multiholes of 2x6.5mm and 2x8.5mm. All specifications on hole size based on outer diameter of the sensor under test.

*We also offer customized hole size based on Customer requirements

- **Reference Standard Thermocouple ('N' Type T/C) (Optional)**

- **Calsoft Software**

- **Operational Manual**

- **NABL accredited calibration certificate (Optional)**

