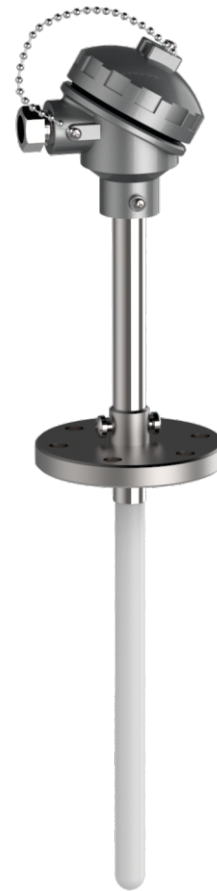


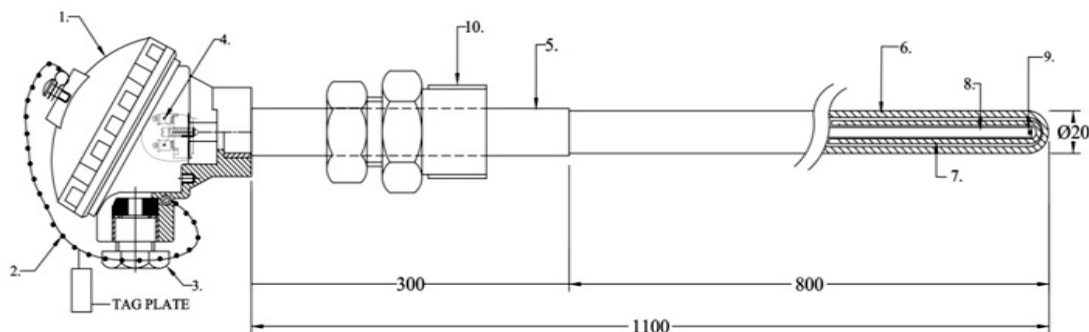
Coke is the most important raw material fed into the blast furnace in terms of its effect on blast furnace operation and hot metal quality. The coke making process involves carbonization of coal to high temperatures (1100°C) in an oxygen deficient atmosphere in order to concentrate the carbon

## SPECIFICATIONS

<b>Element</b>	S, R
<b>No. of Element</b>	Simplex, Duplex
<b>Holding Tube</b>	Ss316, SS310
<b>Double Protection Tube</b>	High Wall Thickness Alumina
<b>Outer Protection Tube</b>	Silicon Carbide/ KER 710
<b>Sheath Diameter</b>	As per customer requirement
<b>Sheath Length</b>	As per customer requirement
<b>Thermowell</b>	Flange Type



## DRAWINGS



S.No.	Description
1	Connection Head Ip67
2	Chain
3	Cable Gland
4	Ceramic Block with Terminal
5	Holding Tube
6	Outer Protection Tube
7	Inner Tube
8	Insulating Tube
9	Element
10	Compression Fitting