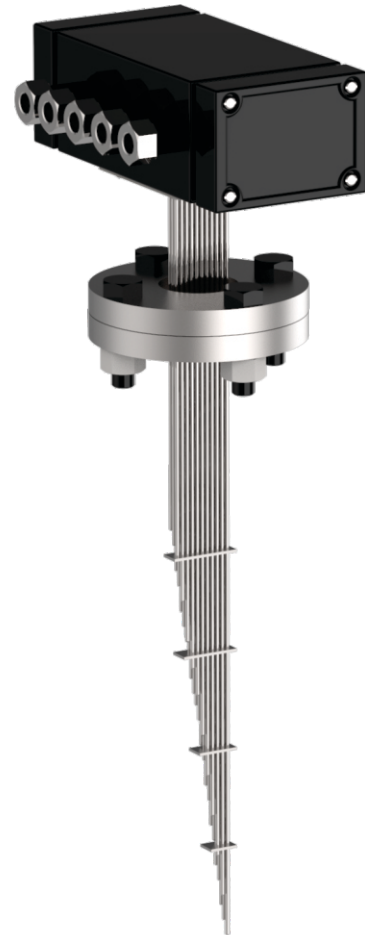


Temperature measurement at different points are possible with Multipoint Thermocouple of various lengths, where multiple sensors can be fixed through a single holding tube or multiple probe individually supported by a single flange.

Custom built multipoint thermocouple can also be designed to withstand extreme working temperatures and pressures. A suitable junction box is provided as per the ambient condition and area classification (Exproof IIB & IIC) at terminal connections, an extension tube to place the junction box away from the radiated vessel.



SPECIFICATIONS

Available materials of Junction Box	Lm6, SS, MS, CS
Measuring Range	0 to 1000°C (depending upon process)
No. of Sensors	As per customer requirement & length up to 40 meters approx.
Sheath Materials	Ss316, SS310, Inconel 600 (nickel alloy 600)