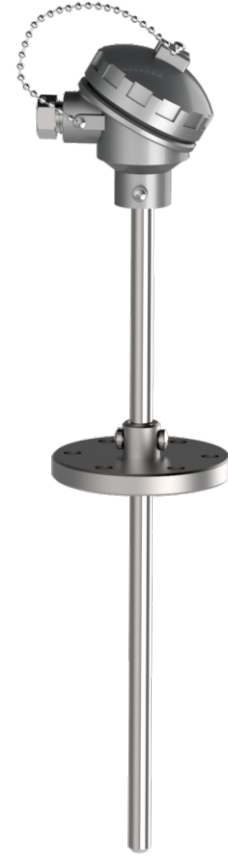


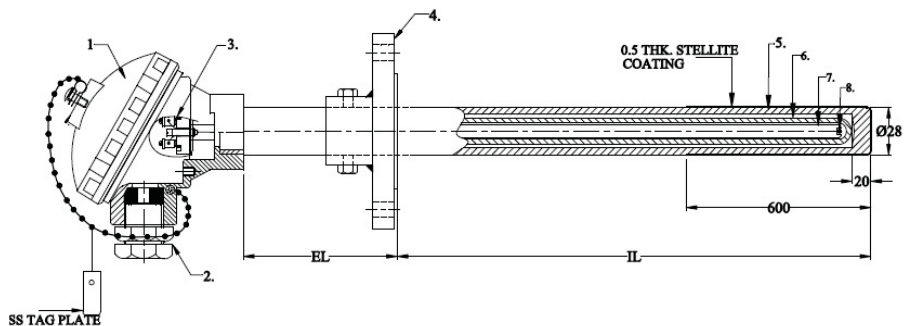
These temperature sensors with Stellite Coating are resistant to high temperature and have abrasion resistance to clinker dust particles. They are installed to monitor the air temperature from Kiln and Pre Heat Tower



SPECIFICATIONS

Element	S Type
Wire Diameter	0.50mm (±0.05)
Thermowell	Inconel 600
Insulation	KER 710
Sheath Diameter (mm)	As per customer requirement
Sheath Length (mm)	As per customer requirement

DRAWINGS



S No.	Description
1	Connection Head IP67
2	Cable Gland ½" NPT (M)
3	Ceramic Block with Terminal
4	1.5" RF 150# Adj. Flange
5	Thermowell Inconel 600
6	Inner Tube KER 710
7	Insulating tube KER 710
8	Element S Type