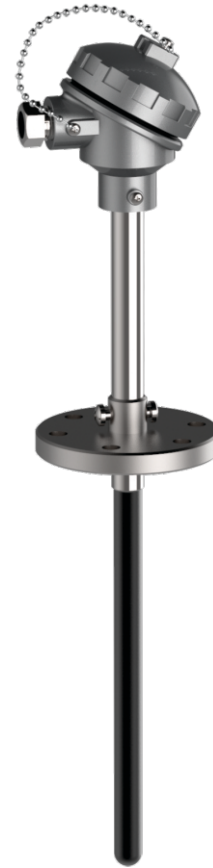


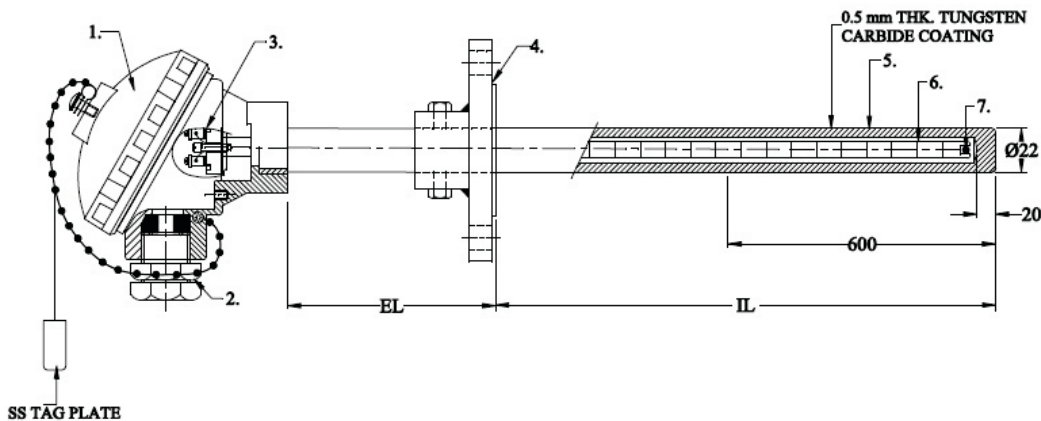
These temperature sensors are installed to monitor the gas and material temperature so that the optimum level of temperature is maintained as any variation will lead to clogging of materials. The temperature sensor for this area of application come in two constructions on without coating and one with 0.5mm thick Tungsten Carbide coating as it provides high abrasion resistance.



SPECIFICATIONS

Element Type	K
Sheath Material	SS 316
Sheath Diameter	As per customer requirement
Sheath Length	As per customer requirement
Insulation	KER 610 Ceramic Beads
Thermowell Material	HRS 446
Calibration	ANSI MC96.1

DRAWINGS



S No.	Description
1	Connection Head Ip67
2	Cable Gland ½" NPT (M)
3	Ceramic Block with Terminal
4	1.5" RF 150# Adj. Flange
5	Thermowell HRS 446
6	Insulating Tube KER 610
7	Element K Type