

Liquid Bath Temperature Calibration



- High Accuracy
- Wide Temperature Range
- Highly Stable Temperature Calibrator for Industrial Field Uses

Liquid Calibration Bath

Wide Temperature Range

The Calsys -80/50 & Calsys -80/50 Autocal offer a wide temperature range from -80 °C to 50 °C

Large immersion depth

The Calsys -80/50 & Calsys -80/50 Autocal is ideal for Industrial/ Laboratory field use. Large immersion depth 200mm with 90x90 access opening and wide operating range.

CFC free refrigerants

The Calsys-80/50 & Calsys-80/50 Autocal extremely highly accurate liquid stirrer bath with free of CFC refrigerants. CFC refrigerant is immensely damaging to the environment. CFC damages the Ozone layer and contributes directly to the destruction of our environment.

Accuracy and performance

The Calsys-80/50 & Calsys-80/50 Autocal is an easily portable unit that also provides excellent calibration accuracy with stability $\pm 0.04^{\circ}\text{C}$ at -80°C .

Accredited calibration

Each Calsys -80/50 & Calsys -80/50 Autocal is delivered with an accredited calibration certificate.

Computer Interface

The communication port (RS-232) enables communication with selected Calsys -80/50 & Calsys -80/50 Autocal calibrators for automation calibration and documentation, thus it made documentation easy.

CALsys -80/50

CALsys -80/50 Autocal

Highly accurate & Automatic Liquid Calibration bath for Industrial/Laboratory field use



CALsys -80/50 Autocal



CALsys -80/50

CALsys -80/50 & CALsys -80/50 Autocal offers easy to use liquid temperature calibrator with high temperature range from -80 to 50°C . It is a highly stable standard furnace for calibrating thermocouples & RTD. It provides superior thermal environment for probe immersion as no air gap exists between the probe and the medium, thermal coupling is therefore much better than the alternatives described and the stirring results in very even heat distribution throughout the medium. Methanol is used for temperature below 0°C , water from 0 to -80°C and silicon oil up to 250°C . It has a large tank which is filled with methanol. The liquid is heated or cooled to the desired temperature. We have seven types of liquid baths. The volume is 9 Ltr. And access opening is 90 X 90 mm with 200mm depth. The temperature of the calibrator is set and controlled by a self-tuned PID controller with automatic super fine adjustment. Our newly designed Calsys -80/50 model offers better esthetic design and performance-wise upgraded to next level. The CALsys -80/50 Autocal is an automatic temperature calibration system for the Thermocouple and RTD's. The system consists of Temperature bath and PC software, which together contribute to the whole cycle of auto calibration process. The system accepts 4 channels, 4 Thermocouples or 4 RTD's. The connection for these channels through special type of locking connectors. The channel configuration can be done with LCD display via touch screen keypad. The thermocouple microvolt & RTD ohm reading for each channel is monitored with CJC compensation. After the calibration process is complete, the PC software generates a report of actual calibrated values for the inputs.

With the Tempsens make Compact Temperature Calibrator, you have chosen an extremely effective instrument which we hope will live up to all your expectations. This is a fast, timesaving, and reliable true industrial temperature calibrator designed for on-site use.

SPECIFICATIONS

CALsys -80/50 Autocal & CALsys -80/50

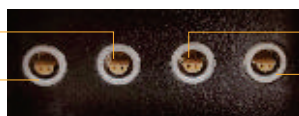
Temperature range	-80 °C to 50 °C
Stability	±0.04°C at -80°C
	±0.07°C at 0°C
	±0.05°C at 50°C
Uniformity	±0.05°C at -80°C
	±0.09°C at 0°C
	±0.07°C at 50°C
Volume	Approx 9 Ltr.
Immersion depth	200mm
Access opening	90x90 mm
Method of Control	Self tuned PID controller
Cooling time	60 Min (Room Temperature to 80°C)
Resolution	0.1°C
Display	LCD, °C or °F user-selectable
Size (H x W x D)	1200(H) x 630 (W) x 500 (D) mm
Weight	135 kg
Power Requirements	230 VAC, 2 KW (50 Hz)
Computer interface	RS - 232
Calibration	Accredited calibration certificate provided (Optional)
Environmental operating conditions	0°C to 40°C, 0% to 90% RH (non-condensing)
Specifications valid in environmental conditions	13°C ... 25°C
PC Interface	Ethernet port (CALsys -80/50 Autocal) , RS - 232 (CALsys -80/50)
Input {CALsys -80/50 Autocal}	Four channels (one master and three test sensors).high quality universal LEMO connector suitable both for T/C {J, K, N,T,R,S, B type) and Rtd
Software CALsys -80/50 Autocal)	The calibrator will be provided with software for data recording (Manual Mode) and Test Certificate genration in Auto Mode
Data logging (CALsys -80/50 Autocal)	Data logging facility with logged data export to computer through LAN port (optional USB)

SENSOR CONNECTION (CALsys -80/50 Autocal)

The Calibration system provides calibration upto four channels i.e. one master and three test sensors .We use high quality universal LEMO connector i.e. suitable both for T/C and Rtd.

Connection for First TEST Sensor

Connection for MASTER Sensor

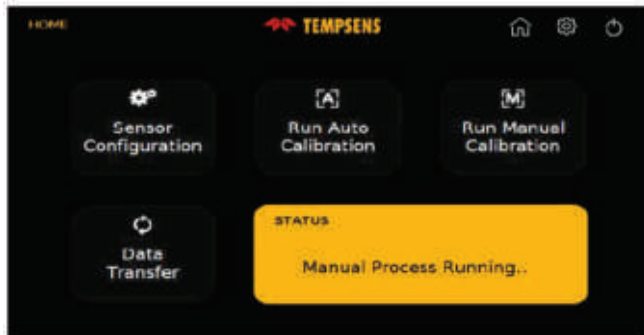


Connection for Second TEST Sensor

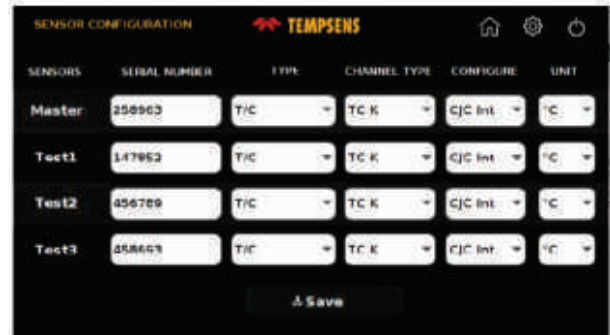
Connection for Third TEST Sensor

USER INTERFACE (CALsys -80/50 Autocal)

Home Screen: In this screen user can select sensor configuration (for selection of type of sensors), mode of operation (auto / manual) and data transfer (file transfer). This window also shows the ongoing process.

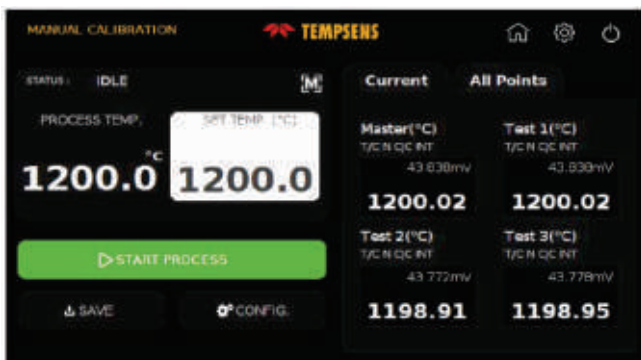


Sensor Configuration: In this screen user select the sensors Thermocouple (J, K, B, N, R, S, T type) / RTD(PT 100, PT 1000, PT50 etc.) for calibration with their serial number and temperature unit (C/F/K).

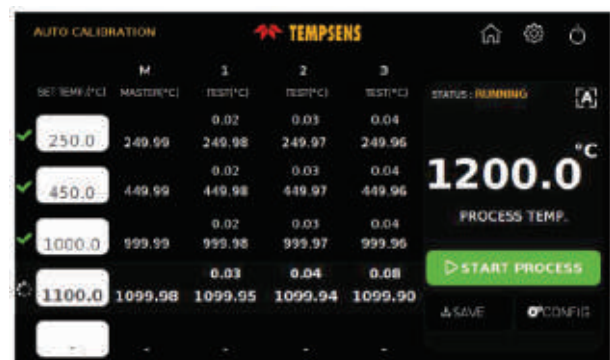


CALSYS -80/50 Autocal have two operating modes i.e. Manual and Auto mode

Manual Mode: In this screen user set the temp. Point for calibration and on clicking start process button the process of calibration starts



Auto Mode : In this screen user sets the temperature Points for calibration (Max 5 Points)



SOFTWARE : Tempsens make Easy to use Customized software enables end user to access temperature data both for Manual mode and Automode



AUTOMATIC CALIBRATION REPORT GENERATION (Optional)

- Tempsens can offer customized data saving option both for manual and Automode.
- After completion manual / Automode a u t o m a t i c calibration report can be generated at PC side based on predefined format.

CALIBRATION REPORT (TEMP MEASURING INST.)					
SYSTEM NO.			SERIAL NO.	1584	
HYDROLYSE UNIT NO.			INST. BRAND		
NAME			MODEL NO.		
DATE CALIBRATED	2019-02-28		LAB. LOCATION (TEMP) : 25 ± 0.5 °C		
DATE OF CALIBRATION	2019-02-28		RECOMMENDED RECALIBRATION DATE	2019-02-28	
POINT	STANDARD TEMP (°C)	MASTER TEMP (°C)	ACTUAL TEMP (°C)	DIFFERENCE (°C)	REMARK
1	100.00	100.23	100.11	-0.12	
2	150.00	150.23	150.11	-0.12	
3					
4					
5					

Insert construction

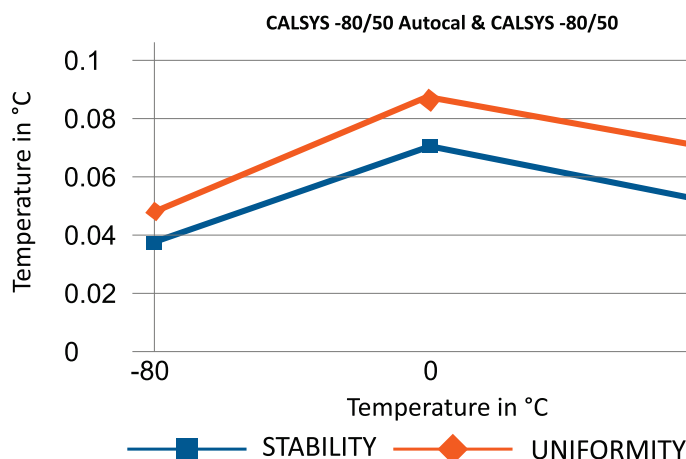
Inserts for CALsys -80/50 Autocal & CALsys -80/50 model

Inserts for CALsys -80/50 Autocal & CALsys -80/50 about 90X90 mm access opening with 200mm intetration depth. All Specifications based on outer diameter of the sensor under test. We also offer customized hole size based on Customer requirements.

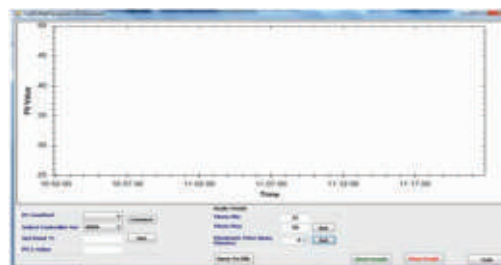
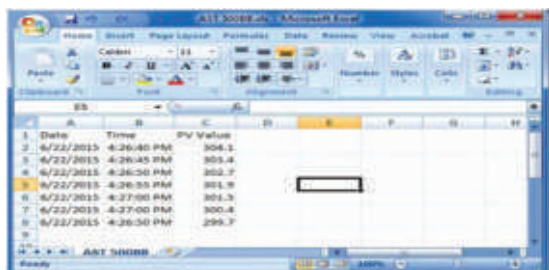
Inserts Model Description

Inserts	Description
Ci1	Multihole, 2 x 6.5 mm, 2x8.5 mm
Ci2	Special (Customized)

STABILITY & UNIFORMITY



SOFTWARE



- CalSoft including for setting bath temperature and monitoring the PV. Graphical representations of PV/TIME with 2 hours data logging.

MASTER SENSOR

- Reference Standard RTD Part no. TPRT-A-300.



- NABL accredited calibration certificate - 3 points (Optional)
- Operational Manual

BLACK BODY CAVITY (OPTIONAL)

The calibration of infrared (IR) thermometers can be performed with black body cavity included with CALsys -80/50 Autocal & CALsys -80/50 calibrator. The black body has special design and structure that ensure a high emissivity and accurate result.



Liquid Calibration Bath

Wide Temperature Range

Calsys -40/50 offer a wide temperature range from -40 °C to 50 °C

Large immersion depth

The Calsys -40/50 is ideal for Industrial / Laboratory field use. Large immersion depth 150mm with 105x105 access opening and wide operating range.

CFC free refrigerants

The Calsys -40/50 extremely highly accurate liquid stirrer bath with free of CFC refrigerants. CFC refrigerant is immensely damaging to the environment. CFC damages the Ozone layer and contributes directly to the destruction of our environment.

Accuracy and performance

The Calsys -40/50 is an easily portable unit that also provides excellent calibration accuracy with stability $\pm 0.05^{\circ}\text{C}$ at 50°C .

Accredited calibration

Each Calsys -40/50 is delivered with an accredited calibration certificate.

Computer Interface

The communication port (RS-232) enables communication with selected Calsys -40/50 calibrators for automation calibration and documentation thus it made documentation easy.

CALsys -40/50

CALsys -40/50 Autocal

Highly accurate Liquid Calibration bath for Industrial / laboratory field use



CALsys -40/50 Autocal



CALsys -40/50

Calsys -40/50 offers easy to use liquid temperature calibrator with high temperature range from -40 to 50°C . It is a highly stable standard furnace for calibrating thermocouples/RTD. It provide superior thermal environment for probe immersion as no air gape exist between the probe and the medium, thermal coupling is therefore much better than the alternatives described and the stirring results in very even heat distribution throughout the medium. Methanol is used for temperature below 0°C water from 0 to 80 and silicon oil up to 250. It has large tank which filled with methanol. The liquid is heated or cooled to the desired temperature. We have seven types of liquid baths. The volume is 6 ltr. And access opening is 105x105mm with 150mm depth. The temperature of the calibrator is set and controlled by a self tuned PID controller with automatic super fine adjustment. Our newly designed Calsys -40/50 model offers better esthetic design and performance wise upgraded to next level.

With the Tempsens make Compact Temperature Calibrator, you have chosen an extremely effective instrument which we hope will live up to all your expectations. This is a fast, timesaving, and reliable true industrial temperature calibrator designed for on-site use.

During the past several years, we have acquired extensive knowledge of industrial temperature calibration. This expertise is reflected in our products which are all designed for daily use in an industrial environment.

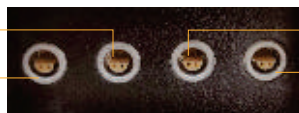
SPECIFICATIONS

Temperature range	-40 °C to 50 °C
Stability	±0.04°C at -40°C
	±0.07°C at 0°C
	±0.05°C at 50°C
Uniformity	±0.05°C at -40°C
	±0.09°C at 0°C
	±0.07°C at 50°C
Volume	Approx 6 Ltr
Immersion depth	150mm
Access opening	105x105 mm
Method of Control	Self tuned PID controller
Cooling time	60 Min (room temperature to -40°C)
Resolution	0.1 °C
Display	LCD, °C or °F user-selectable
Size (H x W x D)	702(H) x 410(W) x 603(D) mm
Weight	65Kg
Power requirements	230 VAC, 2 KW(50 Hz)
Computer interface	RS - 232
Calibration	Accredited calibration certificate provided (Optional)
Environmental operating conditions	0 °C to 40 °C, 0 % to 90 % RH (non-condensing)
Specifications valid in environmental conditions	13 °C ... 33 °C
Input {CALsys -40/50 Autocal}	Four channels (one master and three test sensors).high quality universal LEMO connector suitable both for T/C {J, K, N,T,R,S, B type) and Rtd
Software CALsys -40/50 Autocal)	The calibrator will be provided with software for data recording (Manual Mode) and Test Certificate genration in Auto Mode
Data logging (CALsys -40/50 Autocal)	Data logging facility with logged data export to computer through LAN port (optional USB)

SENSOR CONNECTION (CALsys -40/50 Autocal)

The Calibration system provides calibration upto four channels i.e. one master and three test sensors .We use high quality universal LEMO connector i.e. suitable both for T/C and Rtd.

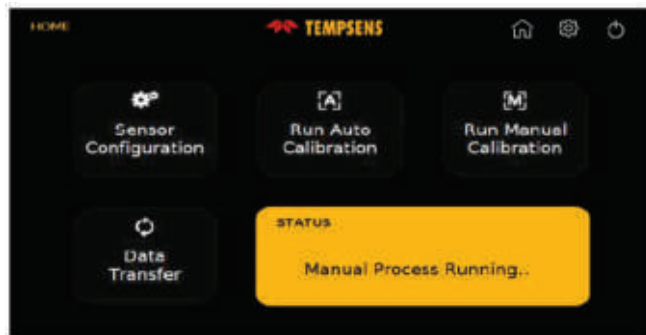
Connection for First TEST Sensor
Connection for MASTER Sensor



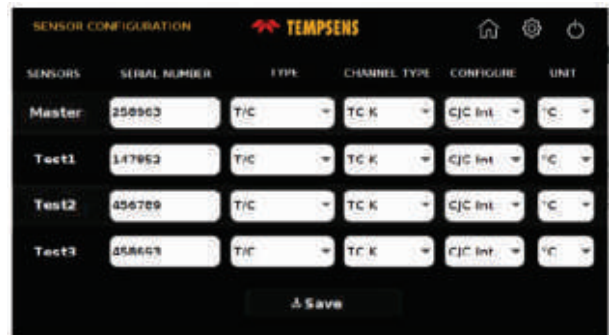
Connection for Second TEST Sensor
Connection for Third TEST Sensor

USER INTERFACE (CALsys -40/50 Autocal)

Home Screen: In this screen user can select sensor configuration (for selection of type of sensors), mode of operation (auto / manual) and data transfer (file transfer). This window also shows the ongoing process.

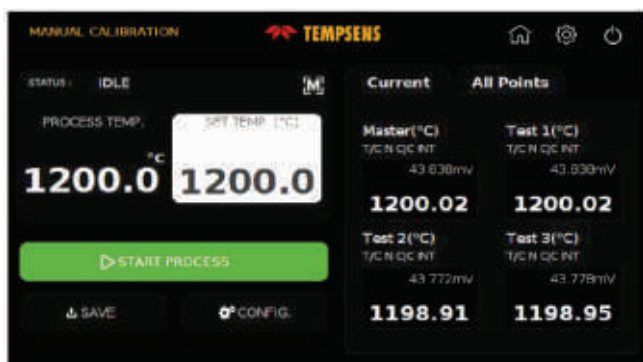


Sensor Configuration: In this screen user select the sensors Thermocouple (J, K, B, N, R, S, T type) / RTD(PT 100, PT 1000, PT50 etc.) for calibration with their serial number and temperature unit (C/F/K).

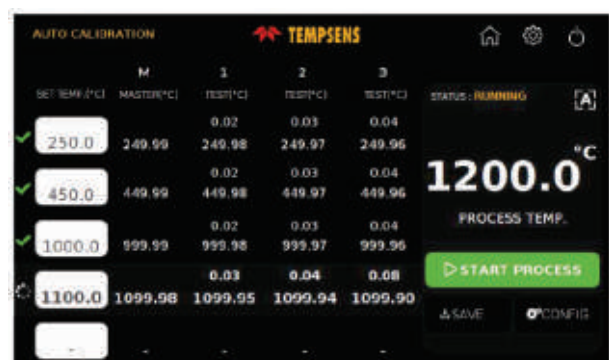


CALSYS -40/50 Autocal have two operating modes i.e. Manual and Auto mode

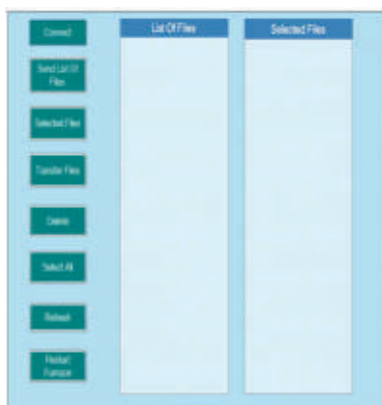
Manual Mode: In this screen user set the temp. Point for calibration and on clicking start process button the process of calibration starts



Auto Mode : In this screen user sets the temperature Points for calibration (Max 5 Points)



SOFTWARE : Tempsens make Easy to use Customized software enables end user to access temperature data both for Manual mode and Automode



AUTOMATIC CALIBRATION REPORT GENERATION (Optional)

- Tempsens can offer customized data saving option both for manual and Automode.
- After completion manual / Automode a u t o m a t i c calibration report can be generated at PC side based on predefined format.

CALIBRATION REPORT (TEMP MEASURING INST.)					
SYSTEM NO.			SERIAL NO.	1584	
HYDROLYSE UNIT NO.			INST. BRAND		
NAME			MODEL NO.		
DATE CALIBRATED	4/1/2018	°C	LAB. CONDITION (TEMP) ± 25 ± 1 °C		
DATE OF CALIBRATION	2017-12-14		RECOMMENDED RECALIBRATION DATE	2019-02-28	
POINT	STANDARD TEMP (°C)	MASTER TEMP (°C)	ACTUAL TEMP (°C)	DIFFERENCE (°C)	REMARK
1	100.00	100.28	100.41	0.13	
2	150.00	150.60	150.93	0.33	
3					
4					
5					

Insert construction

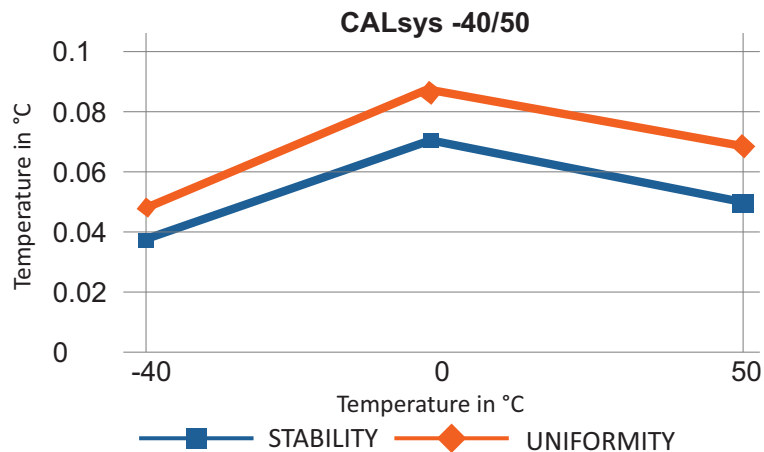
Inserts for CALsys -40/50 Autocal & CALsys -40/50 model

Inserts for CALsys -40/50 Autocal & CALsys -40/50 about 105X105 mm access opening with 200mm intention depth. All Specifications based on outer diameter of the sensor under test. We also offer customized hole size based on Customer requirements.

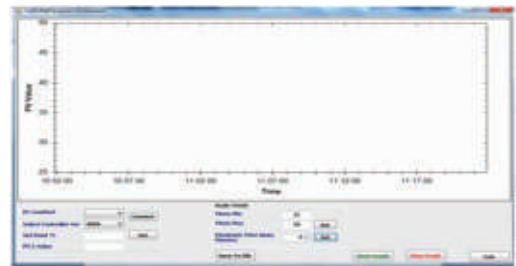
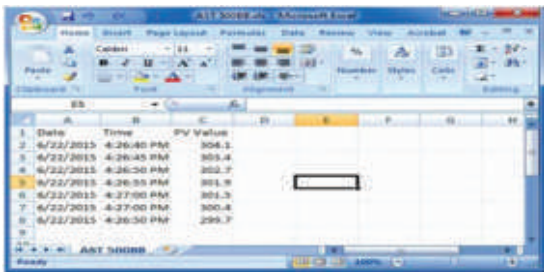
Inserts Model Description

Inserts	Description
Ci1	Multihole, 2 x 6.5 mm, 2x8.5 mm
Ci2	Special (Customized)

STABILITY & UNIFORMITY



SOFTWARE



- CalSoft including for setting bath temperature and monitoring the PV. Graphical representations of PV/TIME with 2 hours data logging.

MASTER SENSOR

- Reference Standard RTD Part no. TPRT-A-300.



- NABL accredited calibration certificate - 3 points (Optional)
- Operational Manual

BLACK BODY CAVITY (OPTIONAL)

The calibration of infrared (IR) thermometers can be performed with black body cavity included with CALsys -40/50 Autocal & CALsys -40/50 calibrator. The black body has special design and structure that ensure a high emissivity and accurate result.



Liquid Calibration Bath

Wide Temperature Range

Calsys -35/200 & Calsys -35/200 Autocal offer a wide temperature range from -35 °C to 200 °C

Large immersion depth

Calsys -35/200 & Calsys -35/200 Autocal is ideal for Industrial I Laboratory field use. Large immersion depth 150mm with 105x105 access opening and wide operating range.

CFC free refrigerants

Calsys -35/200 & Calsys -35/200 Autocal extremely highly accurate liquid stirrer bath with free of CFC refrigerants. CFC refrigerant is immensely damaging to the environment. CFC damages the Ozone layer and contributes directly to the destruction of our environment.

Accuracy and performance

Calsys -35/200 & Calsys -35/200 Autocal is an easily portable unit that also provides excellent calibration accuracy with stability $\pm 0.04^{\circ}\text{C}$ at 200°C .

Accredited calibration

Calsys -35/200 & Calsys -35/200 Autocal is delivered with an accredited calibration certificate.

Computer Interface

The communication port (RS-232) enables communication with selected CALsys -35/200 & CALsys -35/200 Autocal calibrators for automation calibration and documentation thus it made documentation easy.

Calsys -35/200

CALsys -35/200 Autocal



Highly accurate & Automatic Liquid Calibration bath for Industrial/ laboratory field use



CALsys -35/200 Autocal



CALsys -35/200

CALsys -35/200 & CALsys -35/200 Autocal offers easy to use liquid temperature calibrator with high temperature range from -35 °C to 200°C. It is a highly stable standard furnace for calibrating thermocouples/RTD. It provide superior thermal environment for probe immersion as no air gape exist between the probe and the medium, thermal coupling is therefore much better than the alternatives described and the stirring results in very even heat distribution throughout the medium. Methanol is used for temperature below 0 °C, water from 0 °C to 80 °C and silicon oil up to 250°C. It has large tank which filled with methanol. The liquid is heated or cooled to the desired temperature. We have seven types of liquid baths.

The volume is approx 6 Ltr and access opening is 105X105 mm with 150mm depth. The temperature of the calibrator is set and controlled by a self tuned PID controller with automatic super fine adjustment. Our newly designed CALsys -35/200 model offers better esthetic design and performance wise upgraded to next level. The CALsys -35/200 Autocal is an automatic temperature calibration system for the Thermocouple and RTD's. The system consists of Temperature bath and PC software, which together contribute to the whole cycle of auto calibration process. The system accept 4 channels, 4 Thermocouples or 4 RTD's. The connection for these channels through special type of locking connectors. The channel configuration can be done with LCD display via touch screen keypad. The thermocouple microvolt & RTD ohm reading for each channel is monitored with CJC compensation. After the calibration process complete the PC software generates a report of actual calibrated values for the inputs.

With the Tempsens make Compact Temperature Calibrator, you have chosen an extremely effective instrument which we hope will live up to all your expectations. This is a fast, timesaving, and reliable true industrial temperature calibrator designed for on-site use.

SPECIFICATIONS

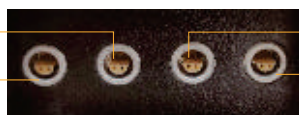
CALsys -35/200 Autocal & CALsys -35/200

Temperature range	-35°C to 200 °C
Stability	±0.01°C at -35°C
	±0.03°C at 0°C
Uniformity	±0.04°C at 200°C
	±0.03°C at -35°C
	±0.05°C at 0°C
	±0.07°C at 200°C
Volume	Approx 6 Ltr.
Immersion depth	150mm
Access opening	105x105 mm
Method of Control	Self tuned PID controller
Cooling time	60 Min (Room Temperature to -35°C)
Resolution	0.1°C
Display	LCD, °C or °F user-selectable
Size (H x W x D)	702(H) x 410 (W) x 605 (D) mm
Weight	65 kg
Power Requirements	230 VAC, 2 KW (50 Hz)
Computer interface	RS - 232
Calibration	Accredited calibration certificate provided (Optional)
Environmental operating conditions	0°C to 40°C, 0% to 90% RH (non-condensing)
Specifications valid in environmental conditions	13°C ... 25°C
Input {CALsys -35/200 Autocal}	Four channels (one master and three test sensors).high quality universal LEMO connector suitable both for T/C {J, K, N,T,R,S, B type) and Rtd
Software CALsys -35/200 Autocal)	The calibrator will be provided with software for data recording (Manual Mode) and Test Certificate genration in Auto Mode
Data logging (CALsys -35/200 Autocal)	Data logging facility with logged data export to computer through LAN port (optional USB)

SENSOR CONNECTION (CALsys -35/200 Autocal)

The Calibration system provides calibration upto four channels i.e. one master and three test sensors .We use high quality universal LEMO connector i.e. suitable both for T/C and Rtd.

Connection for First TEST Sensor
Connection for MASTER Sensor



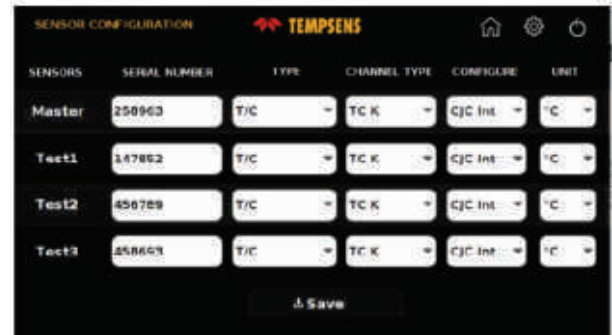
Connection for Second TEST Sensor
Connection for Third TEST Sensor

USER INTERFACE (CALsys -35/200 Autocal)

Home Screen: In this screen user can select sensor configuration (for selection of type of sensors), mode of operation (auto / manual) and data transfer (file transfer). This window also shows the ongoing process.

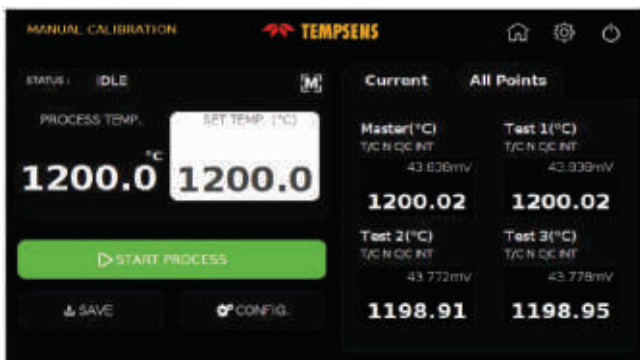


Sensor Configuration: In this screen user select the sensors Thermocouple (J, K, B, N, R, S, T type) / RTD (PT 100, PT 1000, PT 50 etc.) for calibration with their serial number and temperature unit (C/F/K).

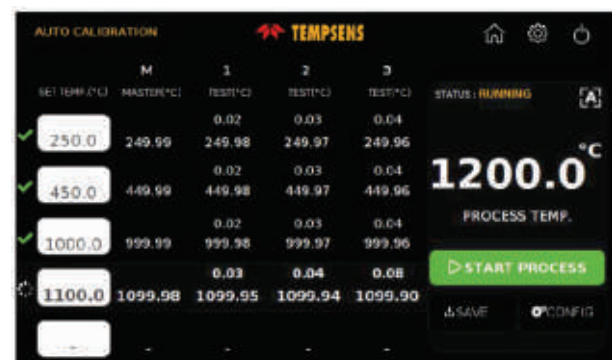


CALSYS -35/200 Autocal have two operating modes i.e. Manual and Auto mode

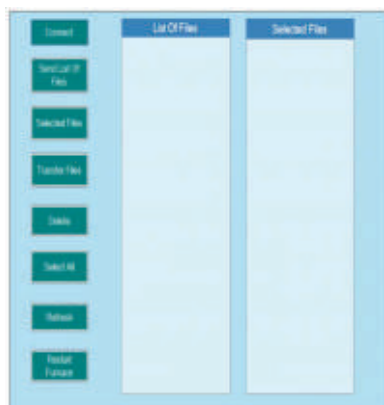
Manual Mode: In this screen user set the temp. Point for calibration and on clicking start process button the process of calibration starts



Auto Mode : In this screen user sets the temperature Points for calibration (Max 5 Points)



SOFTWARE : Tempsens make Easy to use Customized software enables end user to access temperature data both for Manual mode and Automode



AUTOMATIC CALIBRATION REPORT GENERATION (Optional)

- Tempsens can offer customized data saving option both for manual and Automode.
- After completion manual / Automode a automatic calibration report can be generated at PC side based on predefined format.

CALIBRATION REPORT (TEMP MEASURING INSTR.)					
CUSTOMER			SENSENO.	TEMP	
INSTRUMENT MODEL		INSTR. DATE			
PROBE		MODEL NO.			
POWER CALIBRATION	400.00	°C	CALIBRATION TEMP. (°C)		1200.00
DATE OF CALIBRATION	22-07-24		RECOMMEND RECALIBRATION DATE		23-07-24
NO.	SETPOINT (°C)	MEASURED (°C)	DIFFERENCE (°C)	CHECKING (°C)	REMARKS
1	400.00	402.22	2.22	2.32	
2	410.00	407.80	2.20	2.30	
3					
4					
5					

INSERT CONSTRUCTION

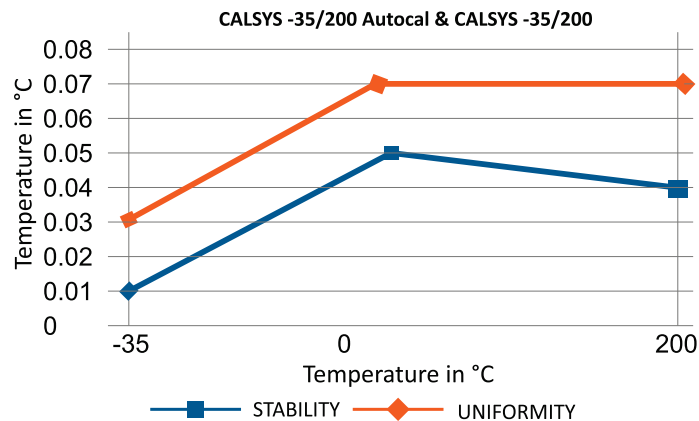
Inserts for CALsys -35/200 Autocal & CALsys -35/200 model

Inserts for CALsys -35/200 Autocal & CALsys -35/200 is about 105X105 mm access opening with 150 mm intention depth. All Specifications based on outer diameter of the sensor under test. We also offer customized hole size based on Customer requirements.

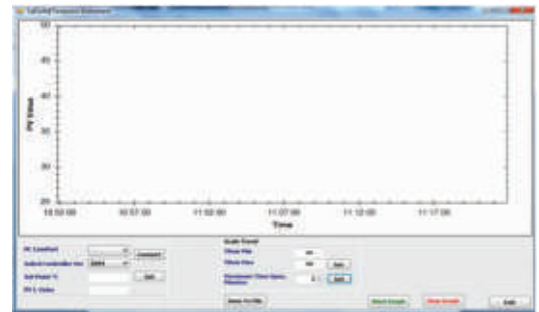
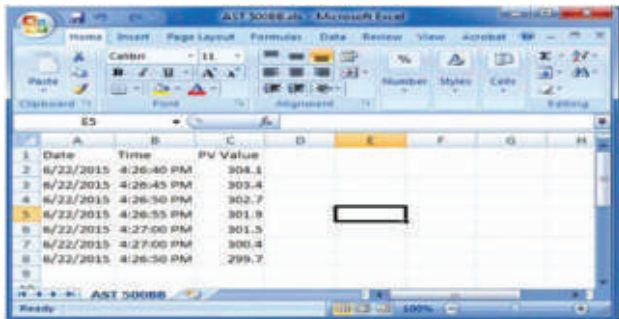
Inserts Model Description

Inserts	Description
Ci1	Multihole, 2 x 6.5 mm, 2 x 8.5 mm
Ci2	Special (Customized)

STABILITY & UNIFORMITY



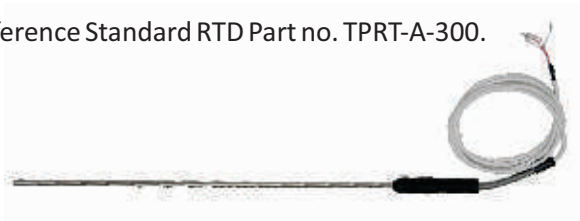
SOFTWARE



- CalSoft including for setting bath temperature and monitoring the PV. Graphical representations of PV/TIME with 2 hours data logging.

MASTER SENSOR

- Reference Standard RTD Part no. TPRT-A-300.



- NABL accredited calibration certificate - 3 points (Optional)
- Operational Manual

BLACK BODY CAVITY (OPTIONAL)

The calibration of infrared (IR) thermometers can be performed with black body cavity included with CALsys -35/200 & CALsys -35/200 calibrator. The black body has special design and structure that ensure a high emissivity and accurate result.



Liquid Calibration Bath

Wide Temperature Range

CALsys 250 offer a wide temperature range from 50 °C to 250 °C

Lightweight, portable

The CALsys 250 is ideal for Industrial / Laboratory field use. It only weighs about 12 kg, and it is small enough to carry around. Large immersion depth and wide operating range.

Speed

The CALsys 250 extremely quick to reach various temperatures, i.e. it cools down to 100 °C in 50 minutes and heats up room temp to +250 °C in 30 minutes. This saves time and increases productivity

Accuracy and performance

The CALsys 250 is an easily portable unit that also provides excellent calibration accuracy with stability $\pm 0.02^{\circ}\text{C}$ at 250°C.

Accredited calibration

Each CALsys 250 is delivered with an accredited calibration certificate.

Computer Interface

The communication port (RS-232/USB) enables communication with selected CALsys 250 calibrators for automation calibration and documentation thus it made documentation easy

Calsys 250

Portable, Lightweight, highly accurate Liquid Calibration bath for Industrial/ laboratory field use



CALsys 250 offers easy to use portable temperature calibrator with high temperature range from 50 to 250°C. It is a highly stable standard furnace for calibrating thermocouples / RTD. It provide superior thermal environment for probe immersion as no air gap exist between the probe and the medium, thermal coupling is therefore much better than the alternatives described and the stirring results in very even heat distribution throughout the medium. Methanol is used for temperature below 0°C water from 0 to 80 and silicon oil up to 250. We have seven types of liquid baths. The comparison volume is a diameter of 90mm and 140mm depth. The temperature of the calibrator is set and controlled by a self tuned PID controller with automatic super fine adjustment. Our newly designed CALsys 250 model offers better esthetic design and performance wise upgraded to next level.

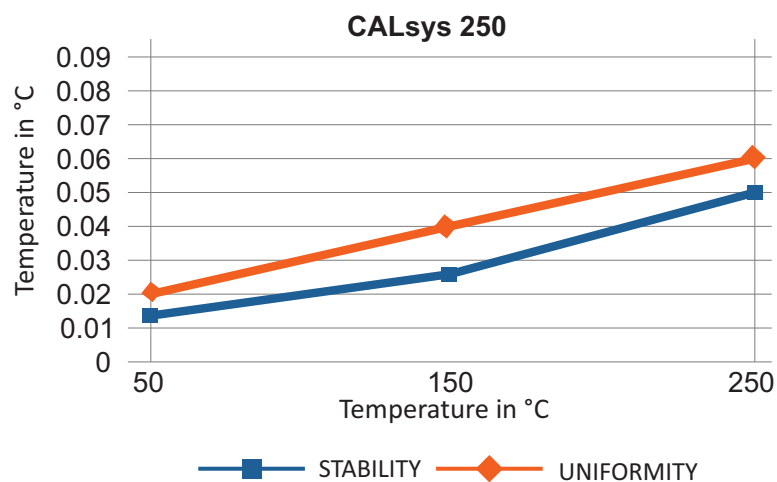
With the Tempsens make Compact Temperature Calibrator, you have chosen an extremely effective instrument which we hope will live up to all your expectations. This is a fast, timesaving, and reliable true industrial temperature calibrator designed for on-site use.

During the past several years, we have acquired extensive knowledge of industrial temperature calibration. This expertise is reflected in our products which are all designed for daily use in an industrial environment.

SPECIFICATIONS

Temperature range	50 °C to 250 °C
Stability	±0.01°C at 50°C
	±0.02°C at 150°C
	±0.03°C at 250°C
Uniformity	±0.02°C at 50°C
	±0.04°C at 150°C
	±0.06°C at 250°C
Removable insert construction	6 holes of 20mm dia
Volume	Approx 2 Ltr.
Hysteresis	±0.30°C
Method of Control	Self tuned PID controller
Immersion depth	140 mm
Access opening	90 mm
Heating time	30 Min
Cooling time	60 Min (250 °C to 100 °C)
Resolution	0.1 °C
Display	LCD, °C or °F user-selectable
Size (H x W x D)	360(H) x 185(W) x 285(D) mm
Weight	12Kg
Power requirements	230 VAC, 1.5 KW(50 Hz)
Computer interface	RS - 232
Calibration	Accredited calibration certificate provided (Optional)
Environmental operating conditions	0 °C to 40 °C, 0 % to 90 % RH (non-condensing)
Specifications valid in environmental conditions	13 °C ... 33 °C

STABILITY / UNIFORMITY

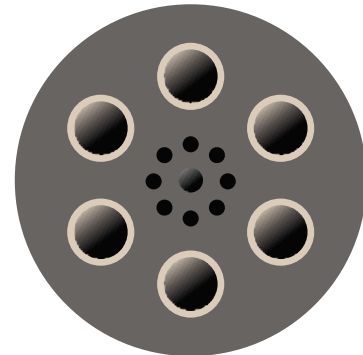


Insert construction

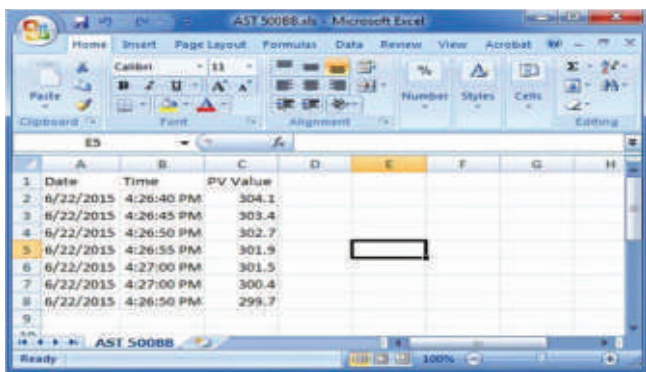
Inserts for Calsys 250 models

Inserts for Calsys 250 is about 90mm access opening with removable inserts of 6 number hole of 20mm dia. All specifications on hole size based on outer diameter of the sensor under test. We also offer customized hole size based on Customer requirements

	Description
Ci1	Multihole, 6x20 mm
Ci2	Special customized



SOFTWARE



- CalSoft including for setting bath temperature and monitoring the PV. Graphical representations of PV/TIME with 2 hours data logging.

MASTER SENSOR

- Reference Standard Thermocouple (RTD)..... Part No. TTCK-300



- NABL accredited calibration certificate - 3 points (Optional)
- Operational Manual

CARRY CASE



- Tempsens makes customized carry case is a rugged, safe perfectly designed to carry our new CALsys 250 calibrator and different accessories.